

Profitable Past Exciting Future

Presentation to the
South Australian
Explorers Conference

Mark Manly
October 2008



Disclaimer

*This presentation has been prepared by Phoenix Copper Limited (**Phoenix Copper**). It is not a disclosure document nor does it constitute the provision of financial product advice. Where Phoenix Copper expresses or implies an expectation or belief as to future events or results, such expectation or belief is expressed in good faith and believed to have a reasonable basis. However, forward-looking statements are subject to risks, uncertainties and other factors, which could cause actual results to differ materially from future results expressed, projected or implied by such forward-looking statements. This information is provided expressly on the basis that the recipient will carry out his or her own independent enquiries into the information and make his or her own independent decisions about the affairs, financial position and prospects of Phoenix Copper. No representation or warranty, express or implied, is made by Phoenix Copper that the information contained in this presentation will be achieved or prove to be correct. To the extent permitted by law, Phoenix Copper and its officers, employees, related bodies corporate and advisers expressly disclaim any responsibility for the accuracy or completeness of the information contained in this presentation and exclude all liability whatsoever for any loss or damage which may be suffered by any person as a consequence of any information or error in, or omission from, this presentation. Phoenix Copper does not undertake any obligation to release publicly revisions to any forward-looking statement, to reflect events or circumstances after the date of this presentation, or to reflect the occurrence of unanticipated events, except as may be required by law. Information in this presentation that relates to Exploration Results, Mineral Resources or Ore Reserves is based on previous announcements made by Phoenix Copper to ASX.*

Phoenix personnel are committed to:

- **Implementing Industry Best Practice in regards to Safety and Environmental issues**
- **Ensuring Safe Work Procedures are always employed**
- **Ensuring all Employees and Contractors are fit for work, trained and embrace safety as a Core Value**
- **Preserving this historic and valued environment in which we work to the best of our ability**



FOCUS

Applying Modern Exploration Techniques in the Mid North Region of South Australia

Four project areas

- Burra
- Mongolata
- Spalding
- Minlaton



Strategic Philosophy

Short Term

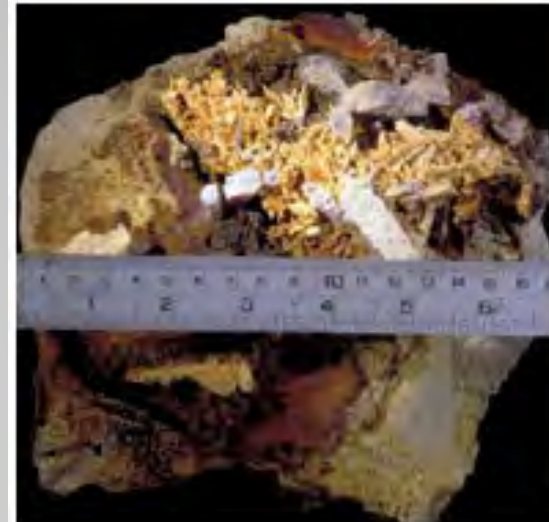
Gold - Mongolata

- ▣ Early Cash Flow - No Marketing
- ▣ Ease of Treatment
- ▣ Lower Capital

Medium/Long Term

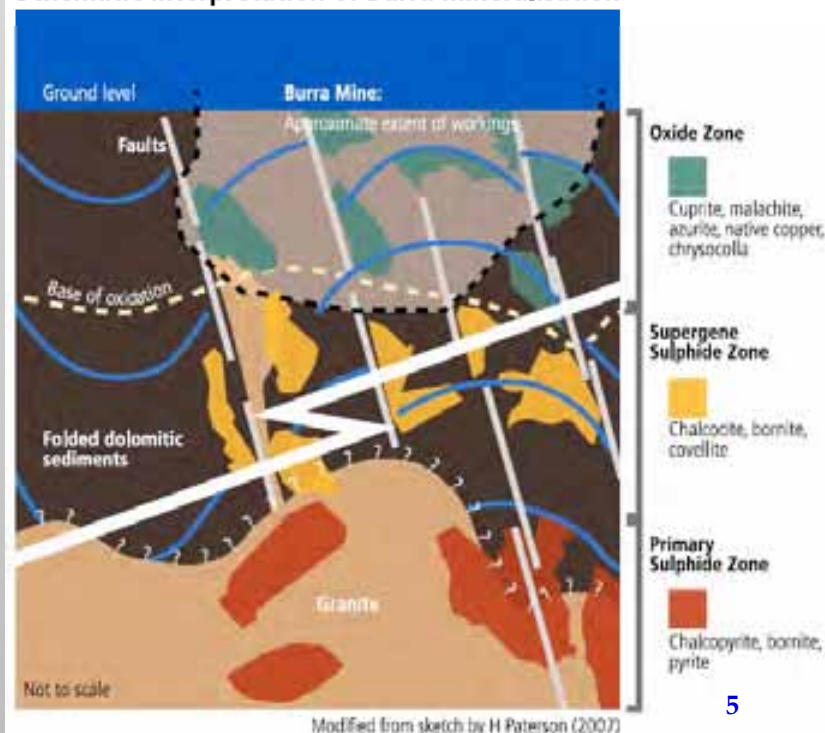
Copper & Copper/Gold - Burra

- ▣ Lifting of Reserve
 - Remnant Mining
 - Pit Extensions
 - Sulphide Source
- ▣ New Ore Zones - Nth & Sth along strike



Crystalline gold and quartz, Mongolata No.1 Mine near Burra (Photo supplied by PIRSA)

Schematic interpretation of Burra mineralisation



Context

BURRA once carried the State

All of South Australia was directly or indirectly employed by the “Monster Mine” during its hey-day (Sir Henry Ayers, seven times State Premier)



Monster Mine 1847



Olympic Dam 2007



Context

BURRA Nation Builder

1859 Burra – Australia’s Largest Inland Settlement



1859 Monster Mine

1208 men - paid £178,900 wages or A\$314M*

2007 Broken Hill

About 880 men - paid ~A\$79.2M wages

* in 2007 terms per capita GDP adjusted using calculator in www.measuringworth.com and then using CBA foreign exchange calculator to value UK£ to A\$

Burra Focus

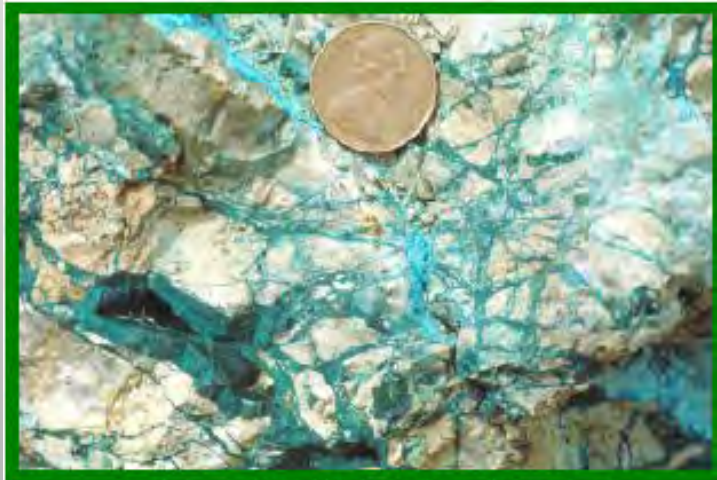
Phoenix Exploration Team - based in the old Butterworth Mill - Cooper St, Burra.

- Office/Administration
 - Accommodation
 - Core Shed
- Low Cost Operations



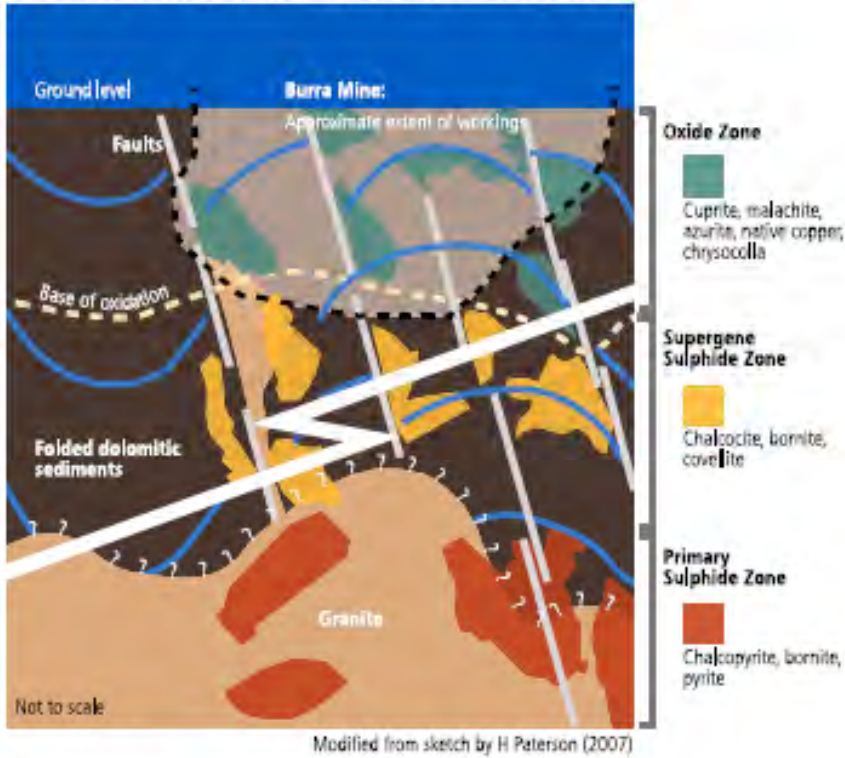
Burra Focus

In the periods 1845 to 1877 and 1971 to 1981 the Monster Mine at Burra produced a total of 2.7Mt @ 3% Cu, and was at one time the largest mine in Australia and the second largest Copper mine in the world.



Banded malachite within hydrothermally brecciated Skillozalee Dolomite from the Burra mine.

Schematic interpretation of Burra mineralisation



Context

BURRA a prize worth pursuing

50,000t of Copper metal valued at about
\$A350M at \$US2/lb
\$A700M at \$US4/lb
Using \$A =.63\$US



A Growing Team

Currently staff of 8

- ▣ Managing Director
- ▣ Personal Assistant
- ▣ Chief Geologist
- ▣ 2 Senior Geologists
- ▣ Field Supervisor
- ▣ 2 Field Assistants
- ▣ 4 of 8 based in Burra

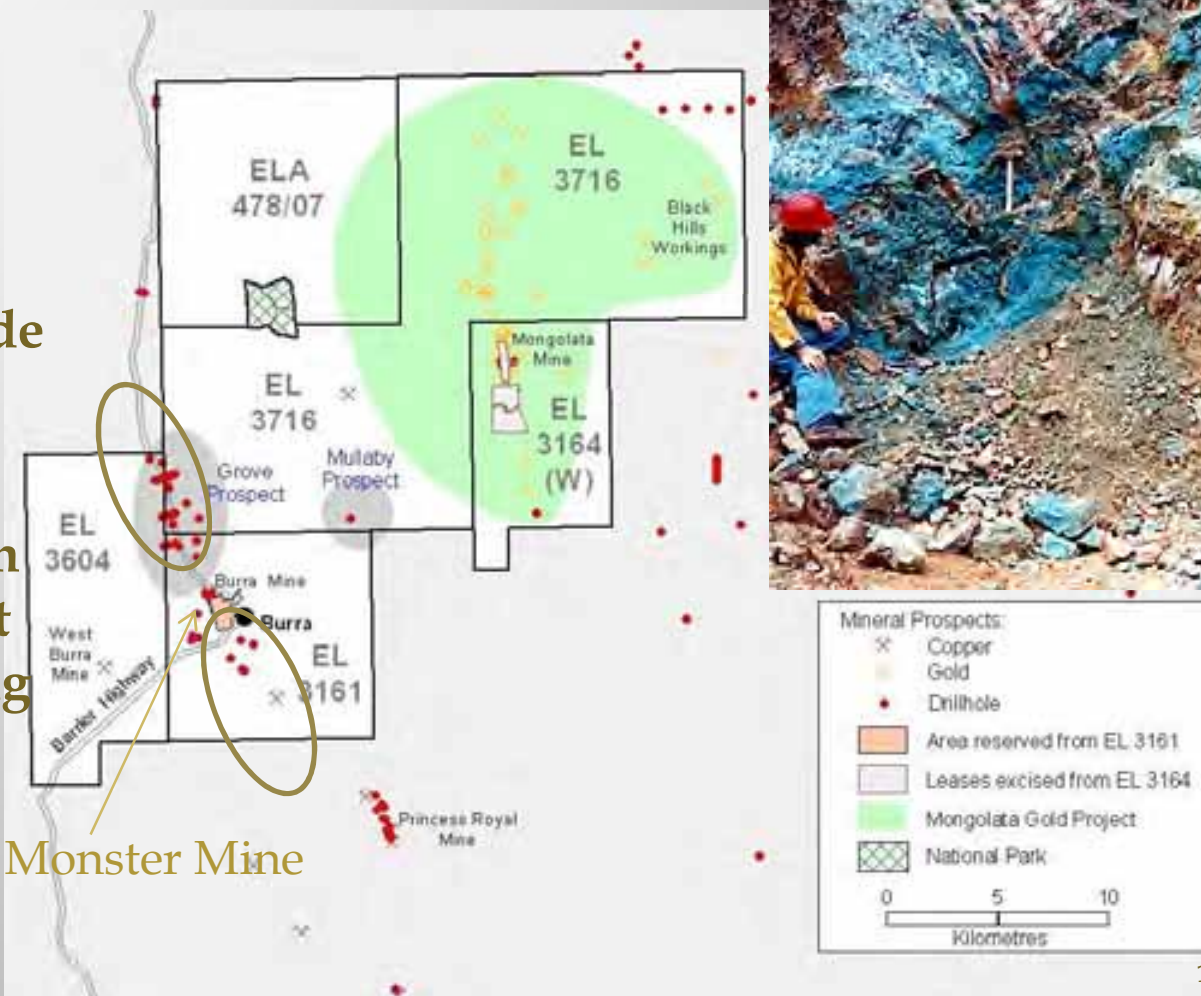


This could increase quickly with any significant discovery and Phoenix will preferentially engage locally

Projects in the Burra Area

Exploration is targeting

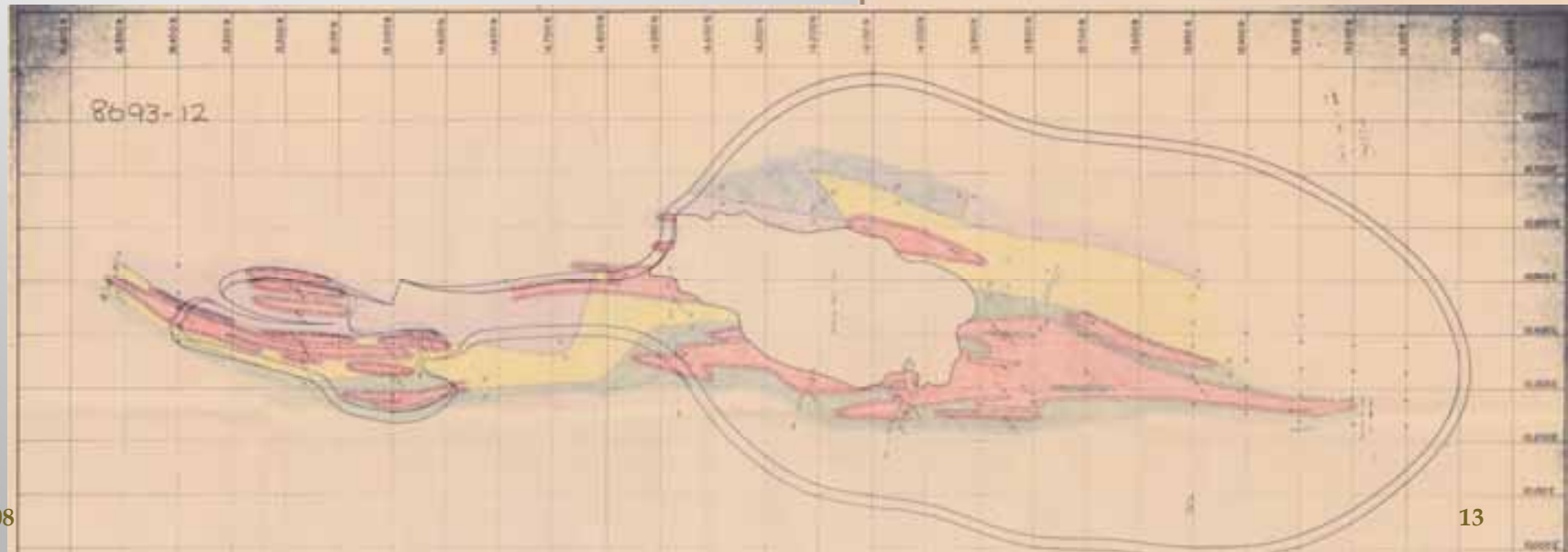
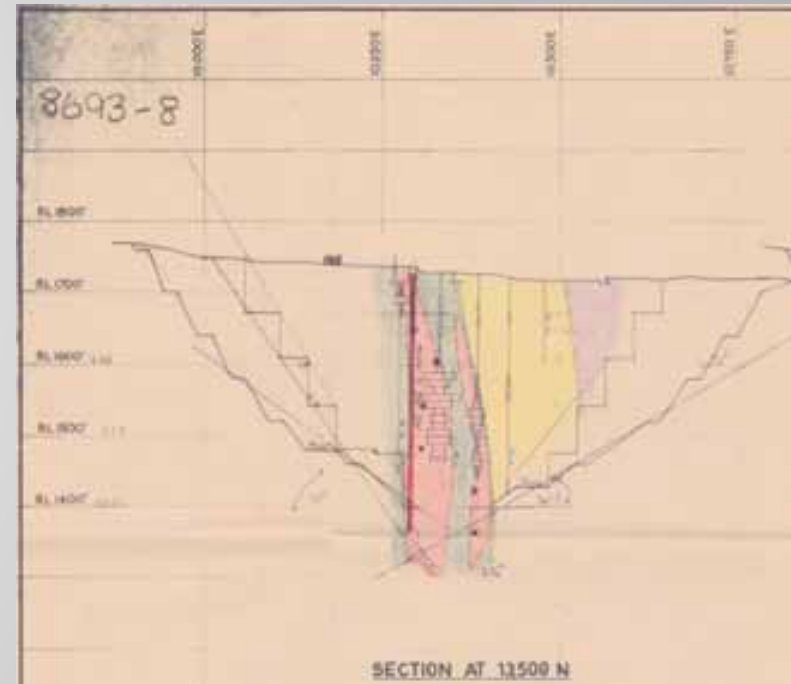
- Repetitions or extensions of the 'Monster Mine' ore body at Burra
- The primary sulphide source of that ore body
- Extensions to known mineralised zones at Burra West, Spalding and Mongolata.



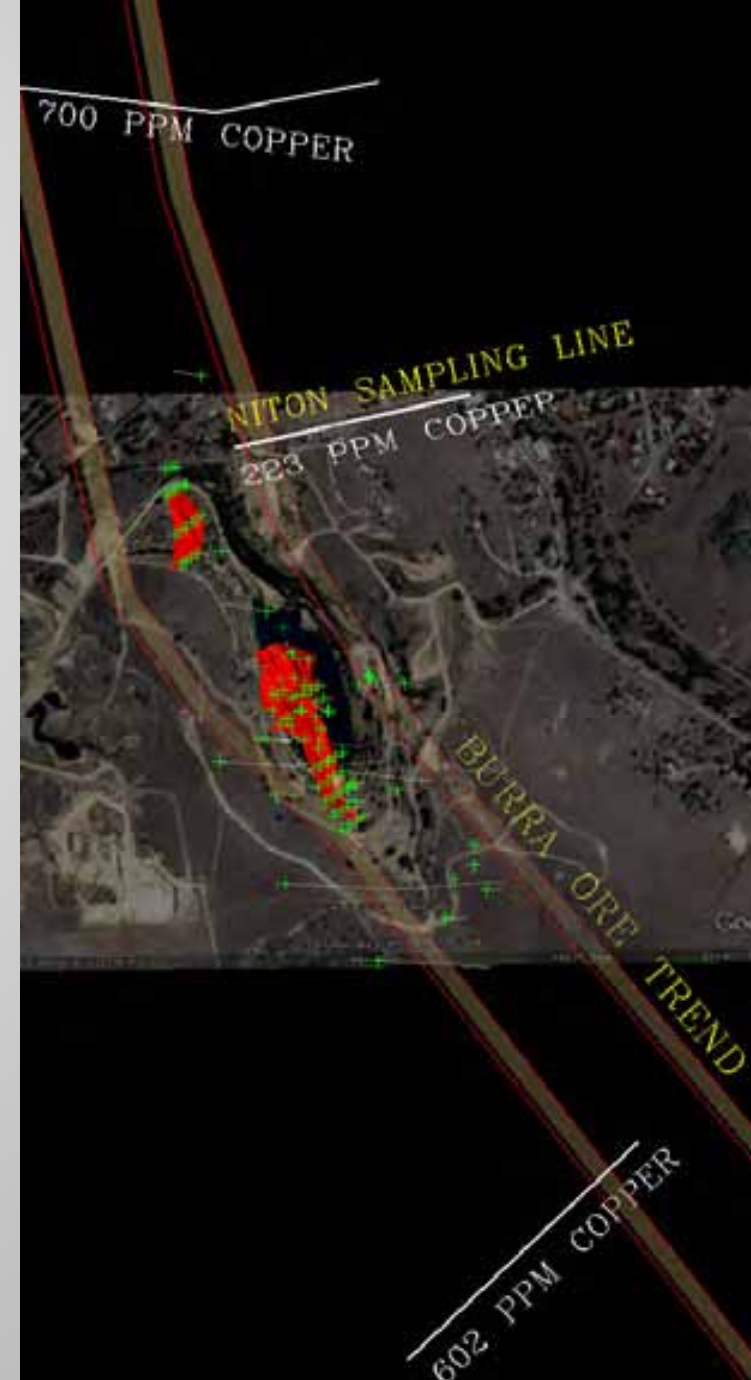
Monster Mine

Burra Mine Area Exploration

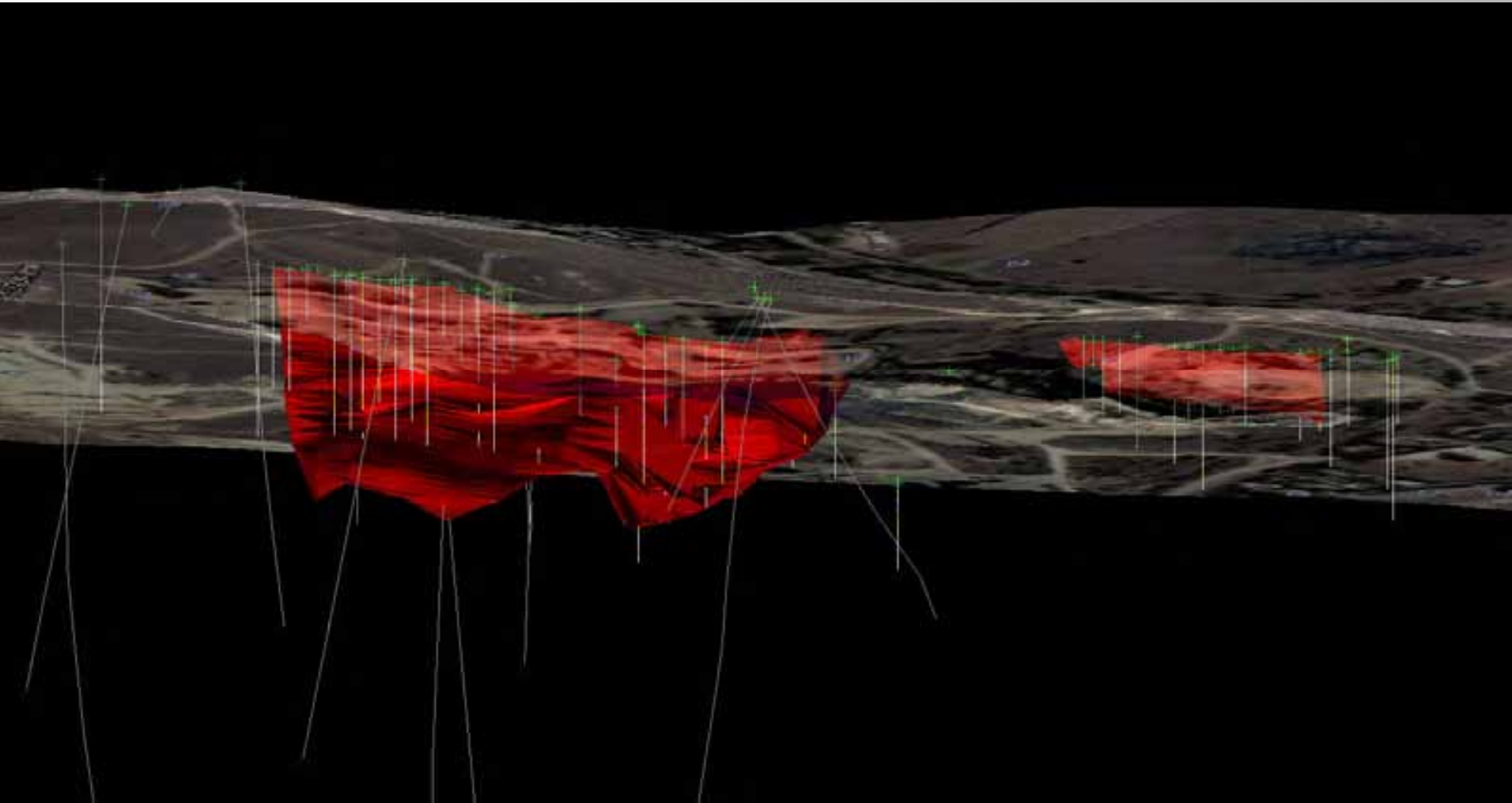
- Compile, georeference and import into MapInfo and Vulcan existing data
- Create a 3D geological model of the Mine Area
- Create a 3D block model of the ore body
- Plan drilling along strike and at depth considering proximity to houses and infrastructure and the requirements for dust and noise reduction measures
- Diamond drill



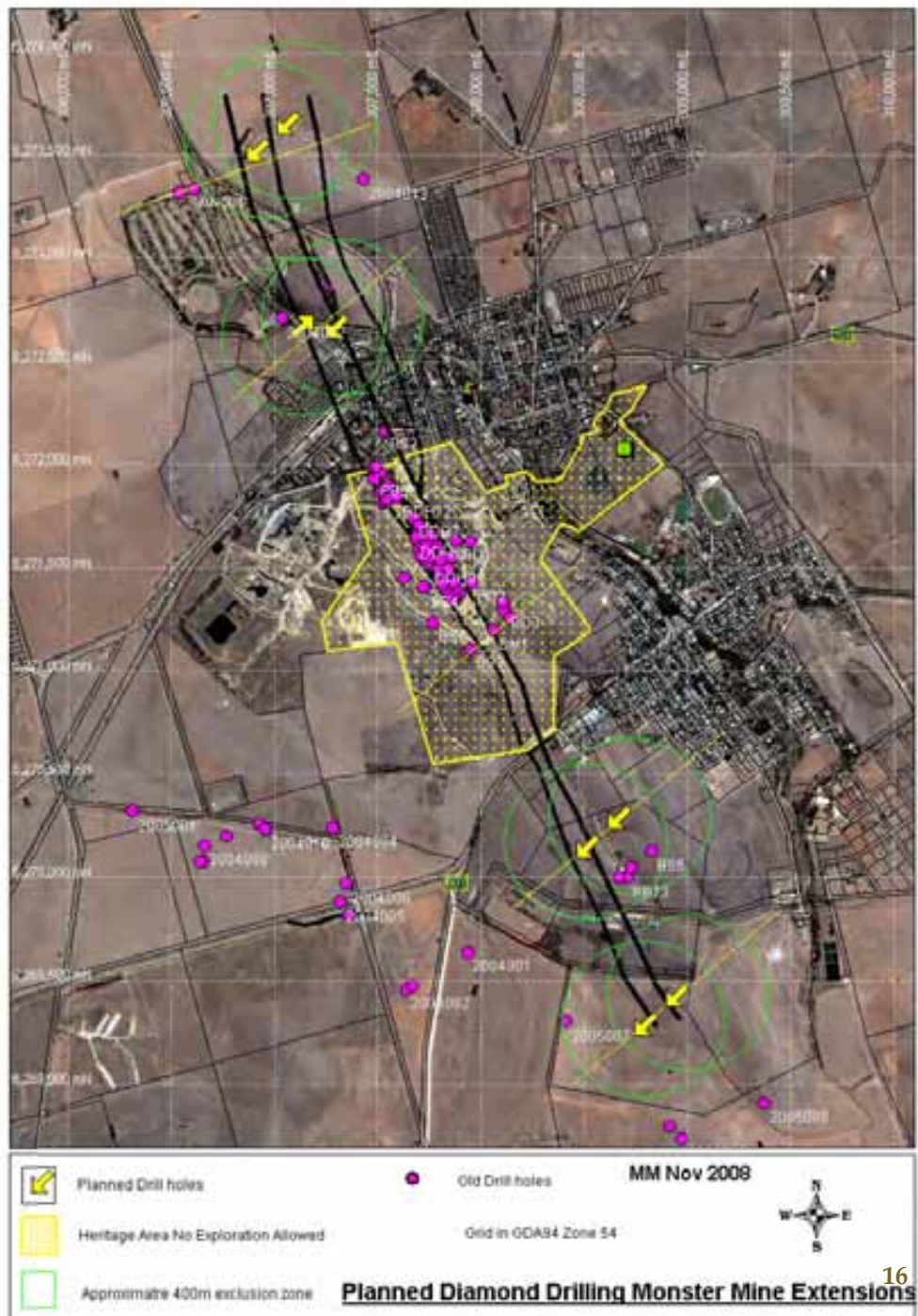
Vulcan Image - Monster Mine Ore Body Burra Ore Trend - Niton Analyses Confirms



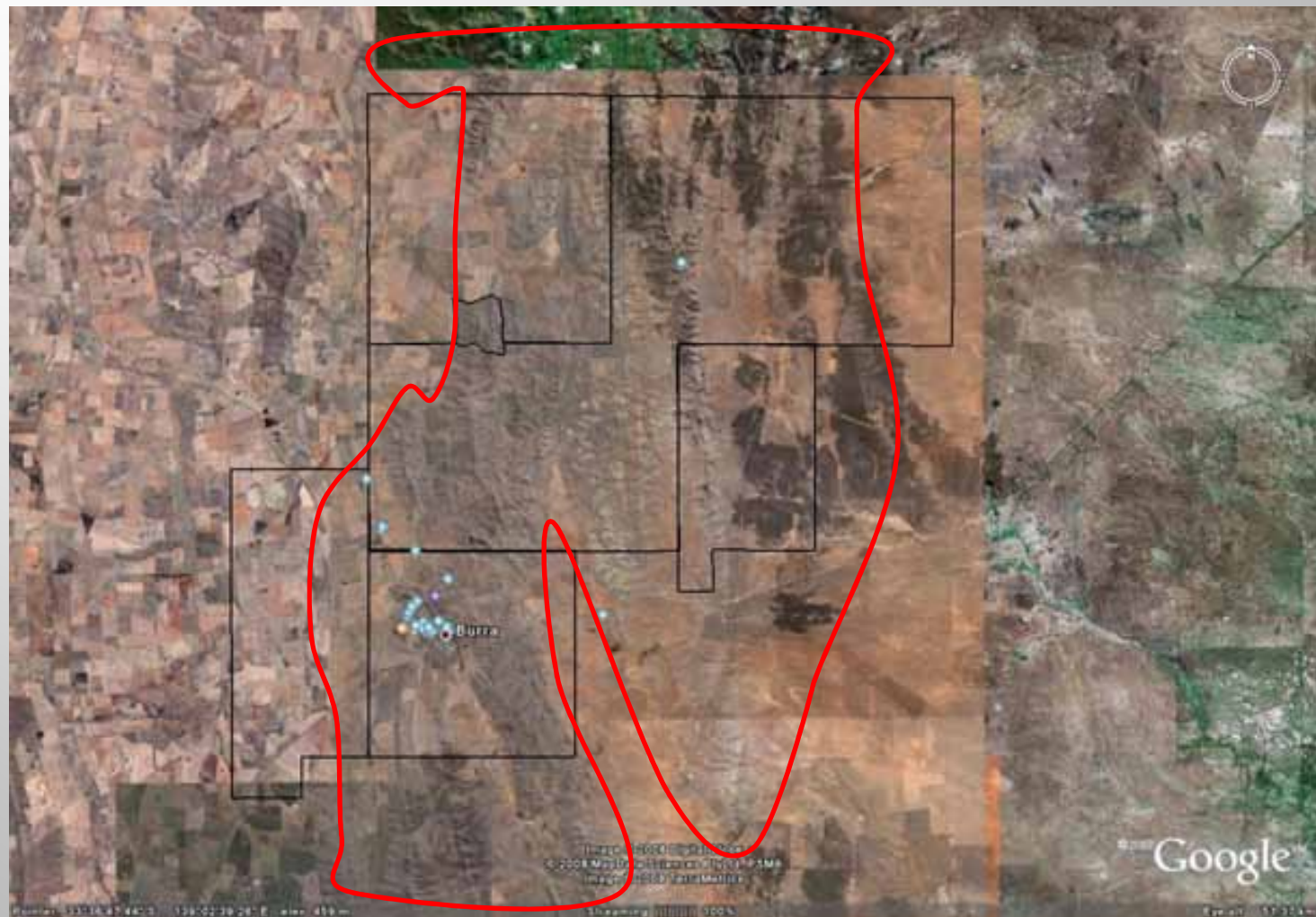
Vulcan Image - Monster Mine



Burra Drilling Planned



Burra region is good terrain for soil sampling

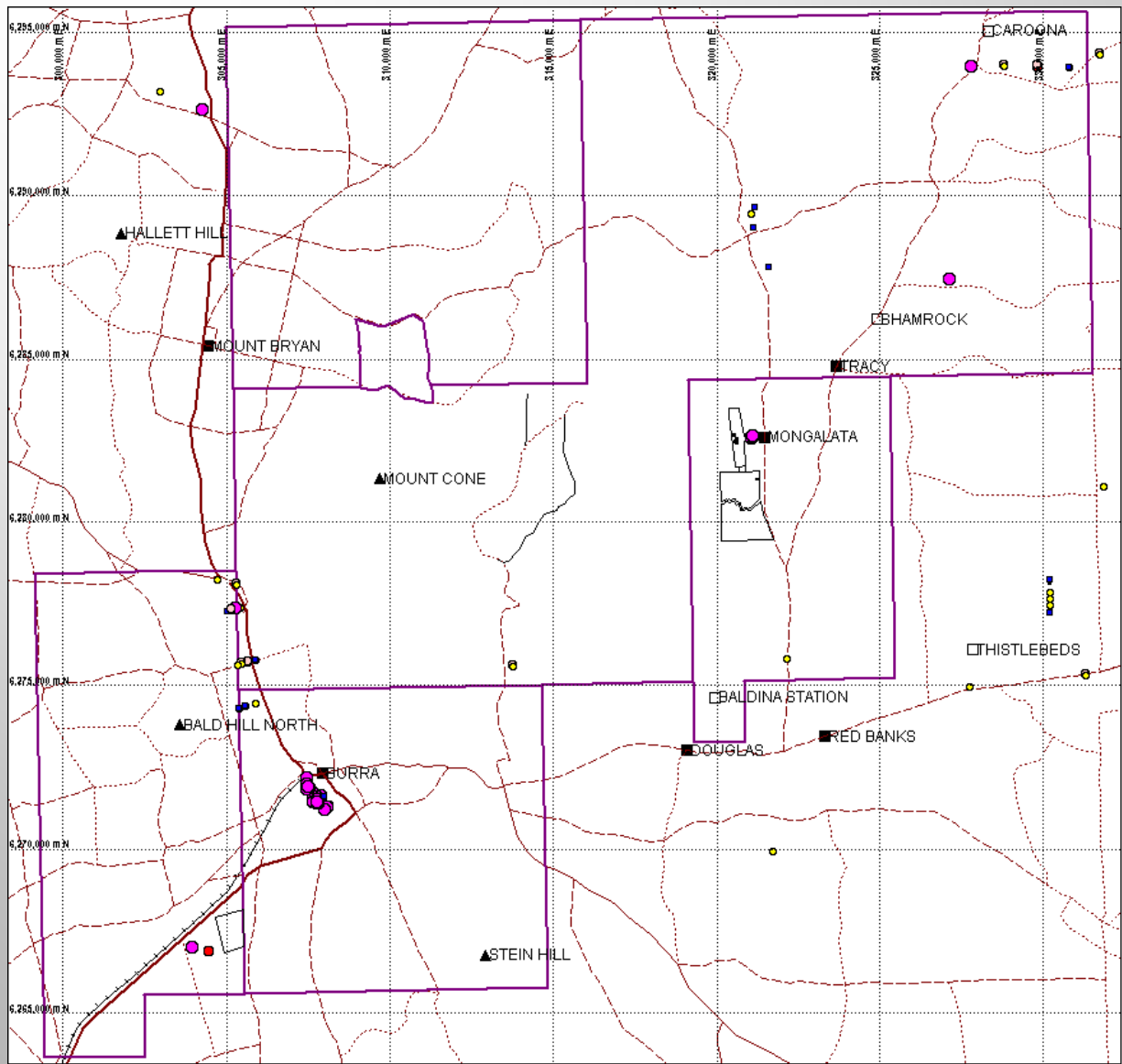


Niton sampling is friendly to the Environment



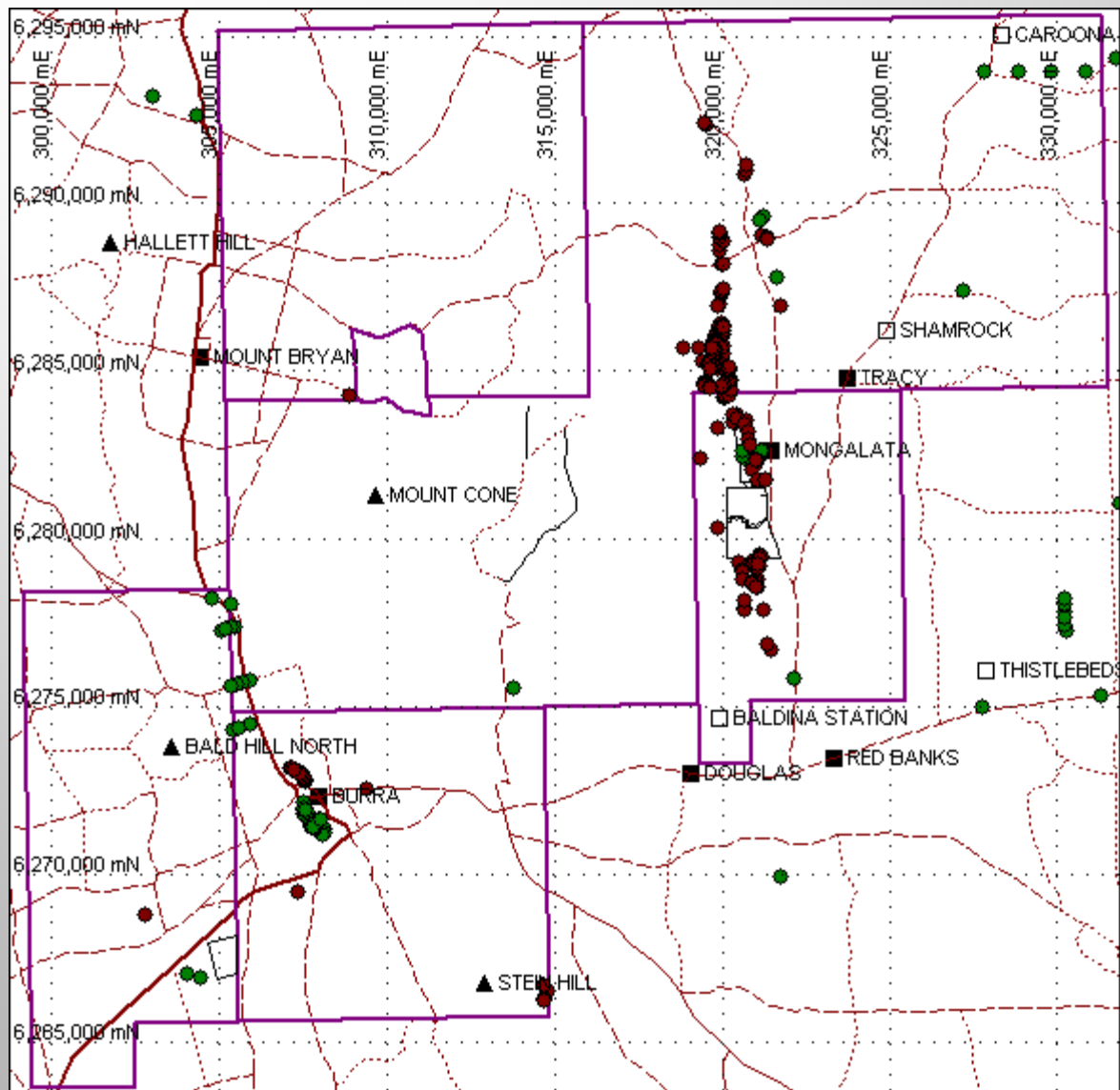
- Quiet - two men walking
- Dust free - boot scuff only
- Non destructive - no sample removed
- Efficient - 200 -300 samples per 8hr day

Recent Activity and Results



Available data from
SA Government
dataset 20th Mar 2008

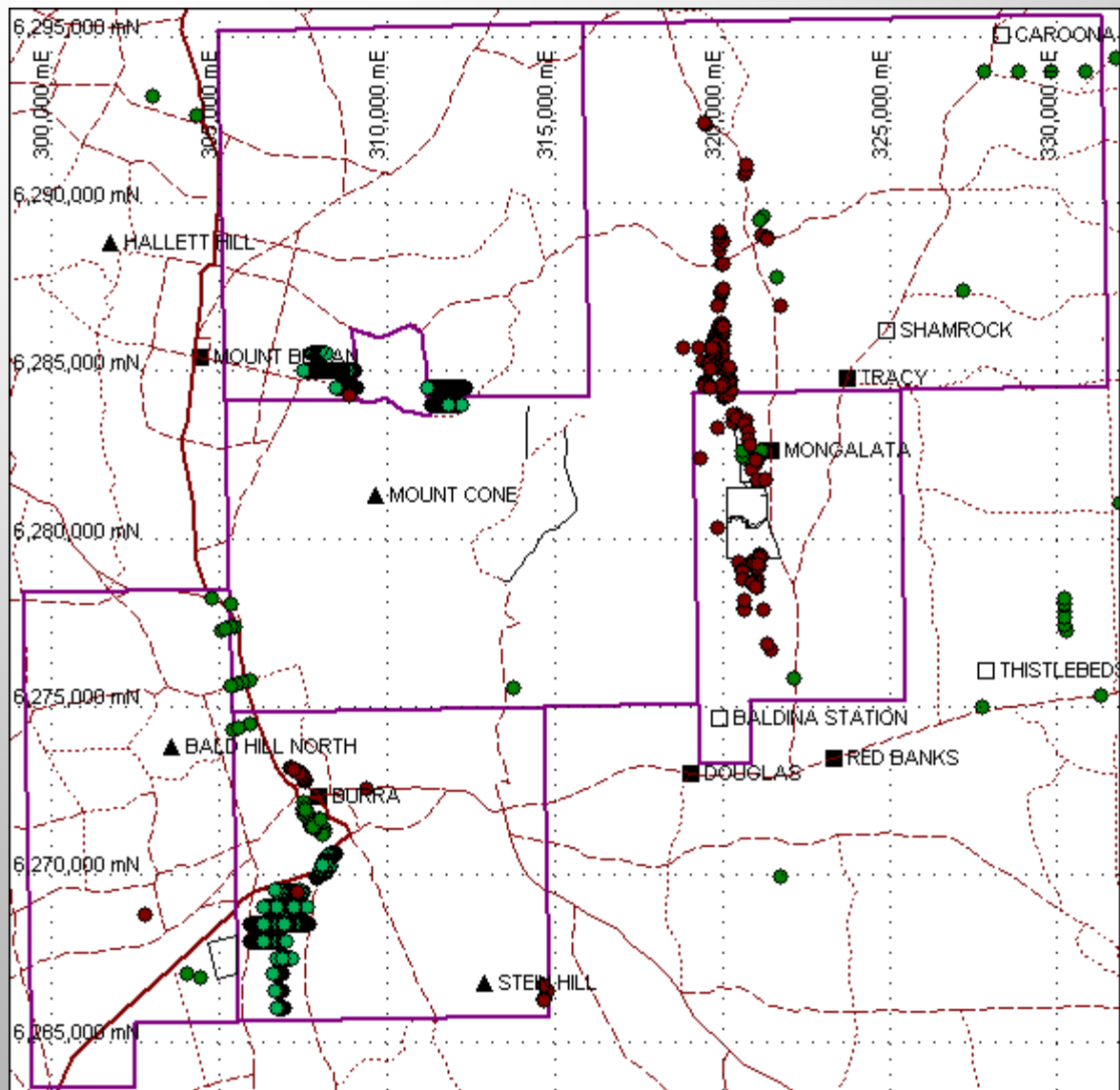
Recent Activity and Results



Available data from SA
Government dataset 20th
Mar 2008

Added 467 Rock Chips

Recent Activity and Results

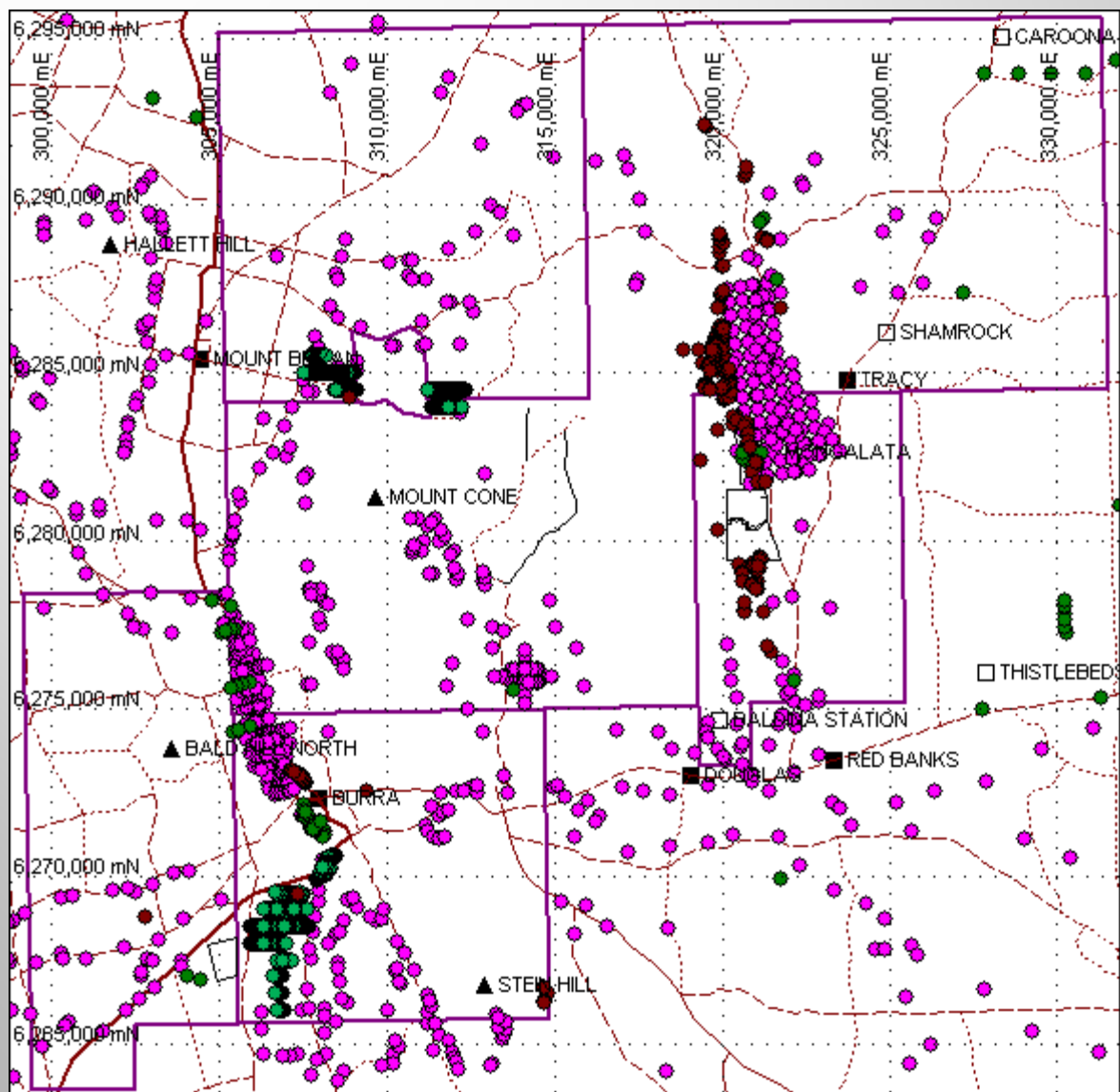


Available data from SA
Government dataset 20th
Mar 2008

Added 467 Rock Chips

Added 629 Sieved Soil
Samples

Recent Activity and Results



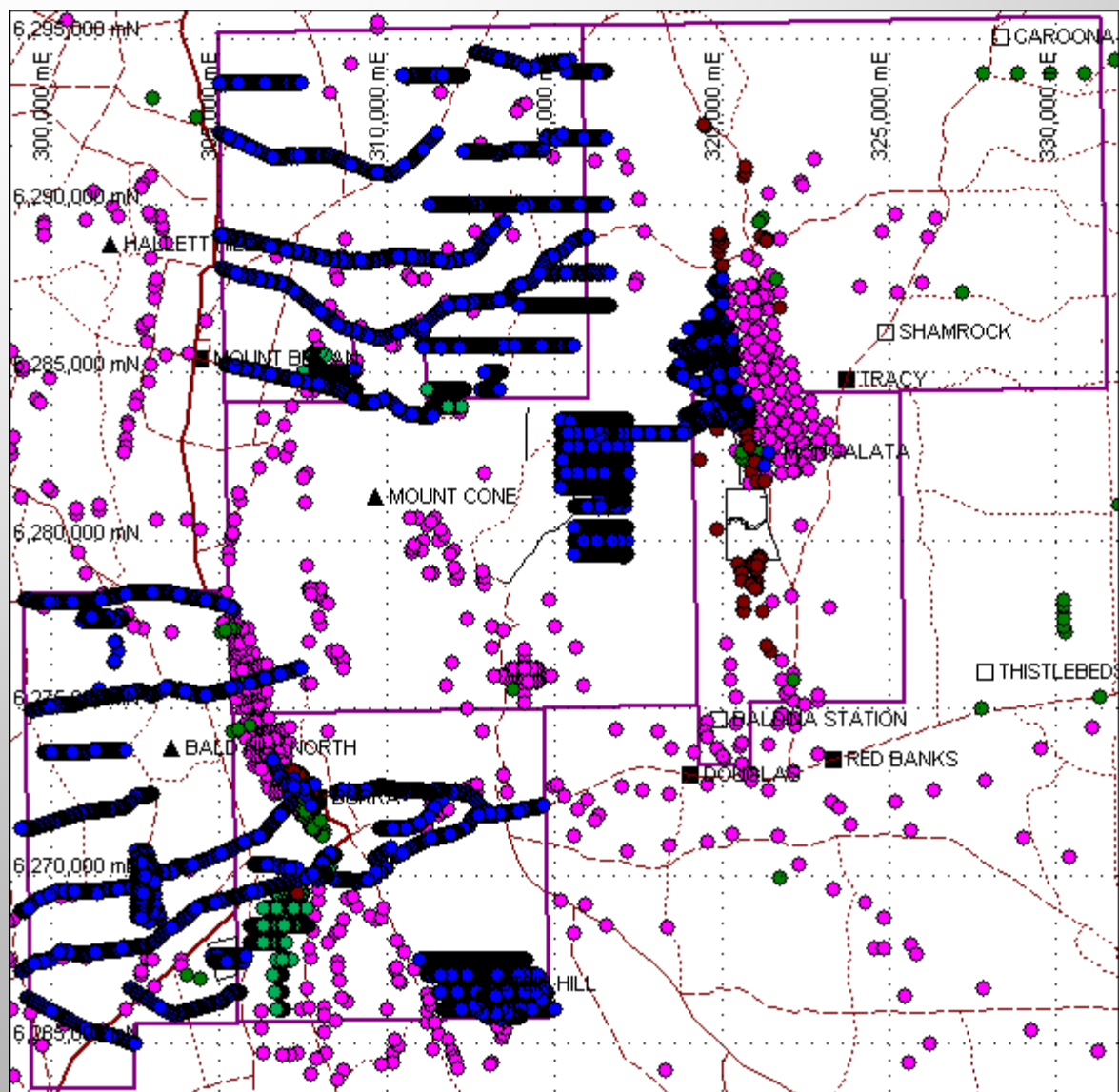
Available data from SA
Government dataset 20th
Mar 2008

Added 467 Rock Chips

Added 629 Sieved Soil
Samples

Located 7050 samples
from previous workers

Recent Activity and Results



Available data from SA
Government dataset 20th
Mar 2008

Added 467 Rock Chips

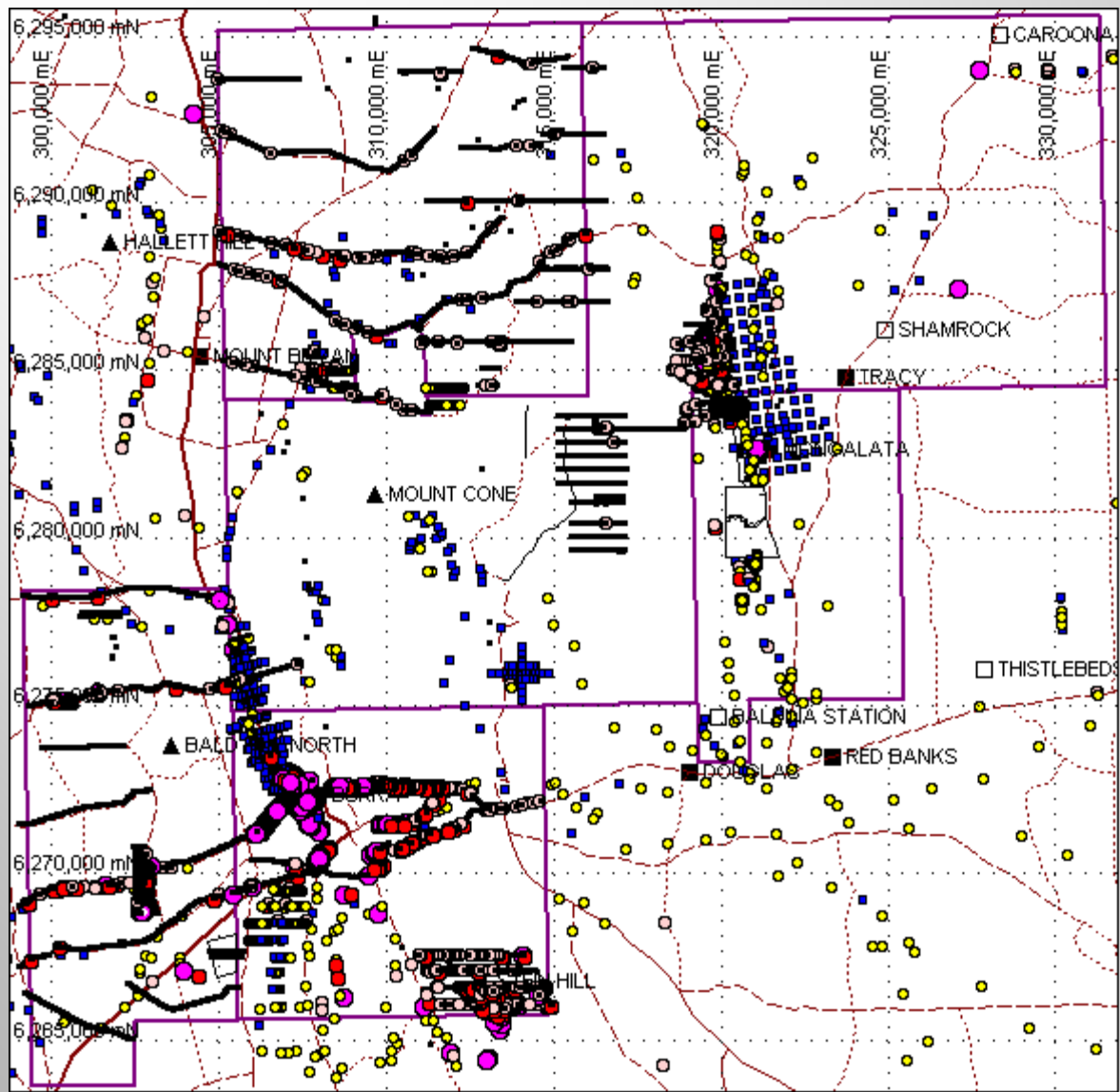
Added 629 Sieved Soil
Samples

Located 7050 samples
from previous workers

Added 8878 Niton
samples

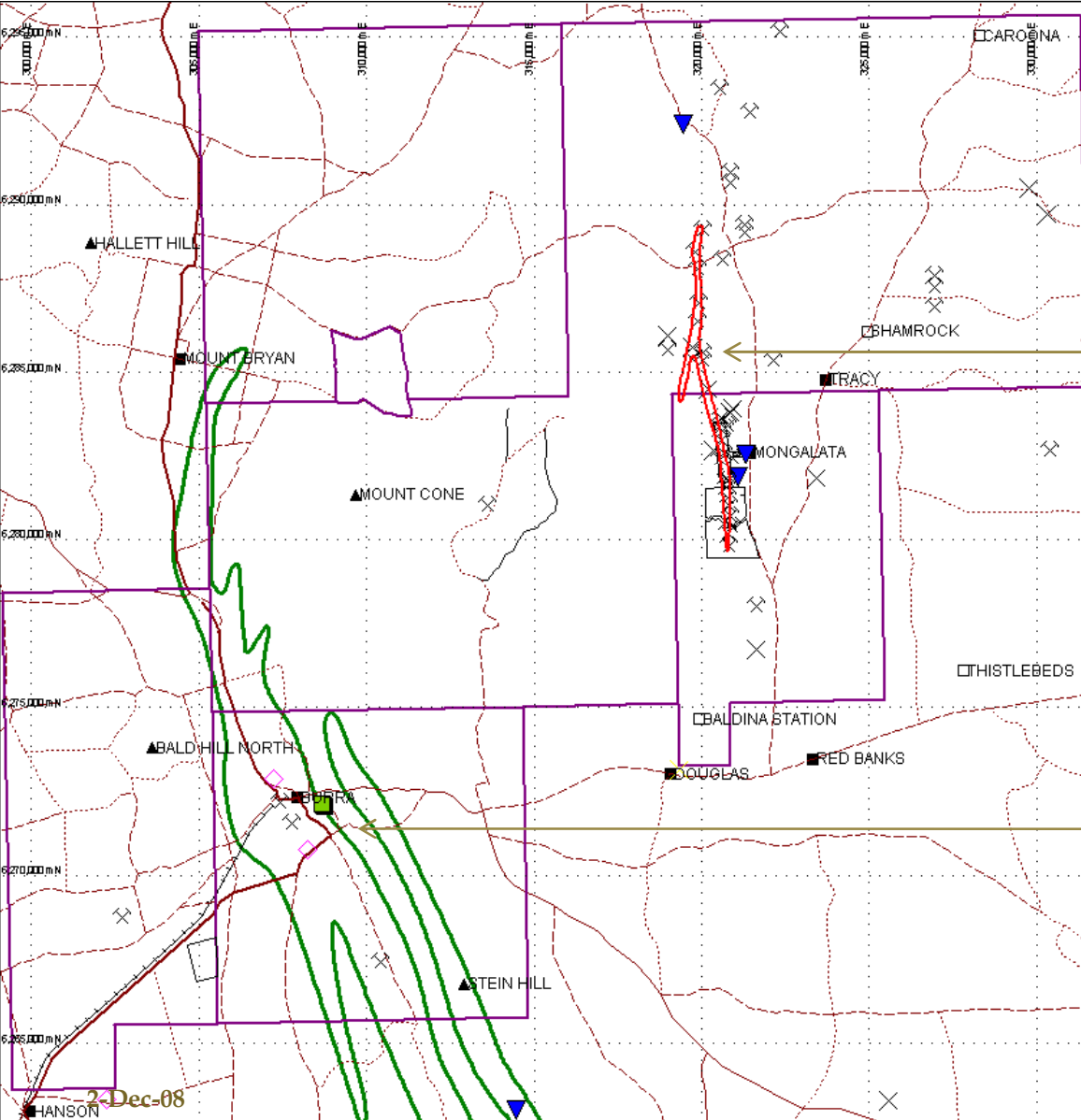
Recent Activity and Results

17,024 data points added during the last 6 months by Phoenix Copper



geochem_denorm by CU_PPM	
●	160 to 460,000 (26648)
●	80 to 160 (12726)
○	40 to 80 (16138)
●	20 to 40 (24561)
■	1 to 20 (32995)
■	-10,000 to 1 (66476)

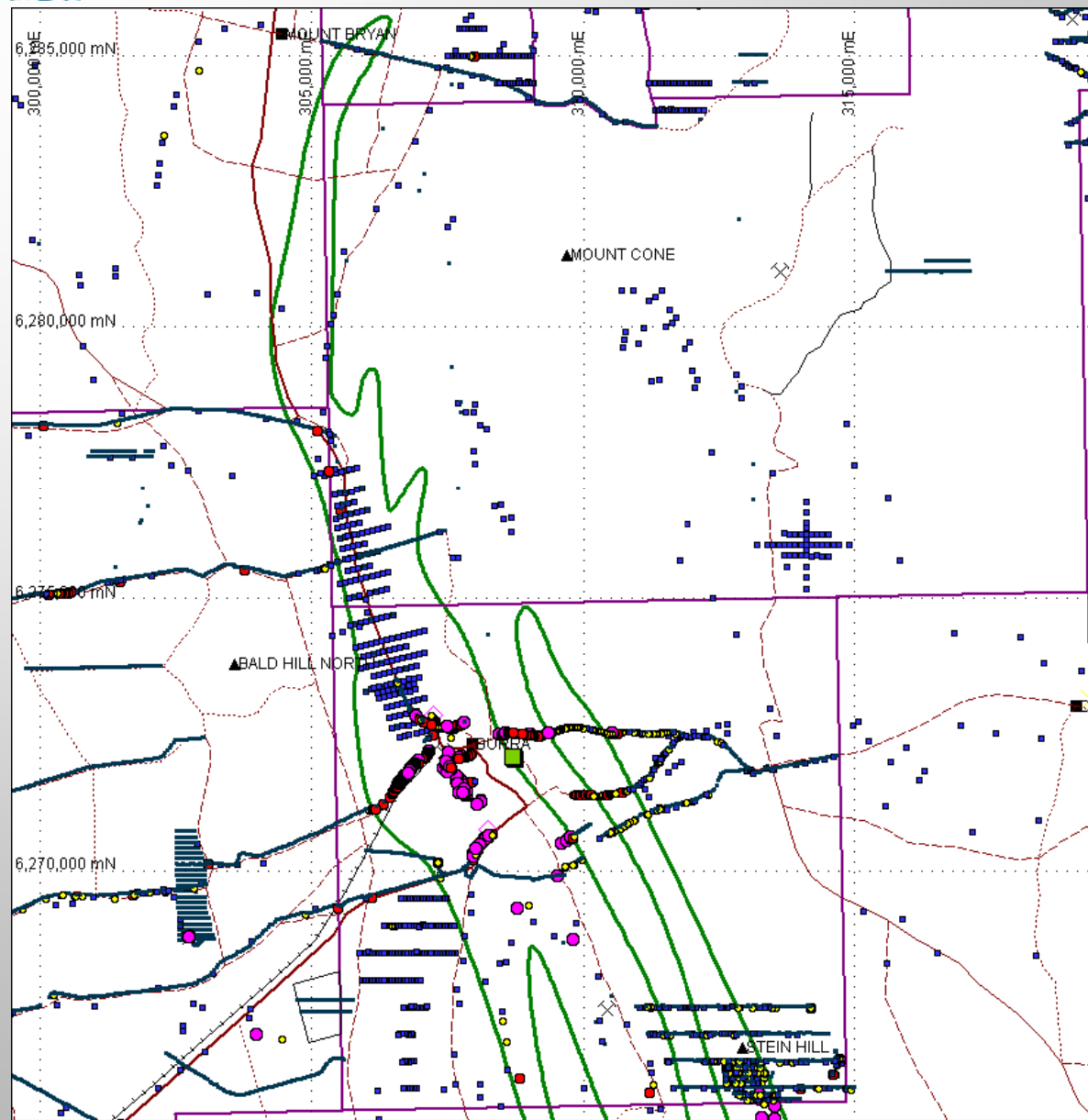
Geochemical Anomalies Identified



**Mongolata
Coincident
Copper Gold Arsenic
Trend**

**Monster Mine
Copper Trend**

Monster Mine Copper Trend



Under explored

**Almost no drilling
away from the mine**

calcrete_denorm by CU_PPM		
●	300 to 460,000	(3)
●	150 to 300	(1)
●	75 to 150	(5)
■	1 to 75	(380)
■	-10,000 to 1	(8)

Mongolata Project

The Mongolata mining centre occurs about 20km east of Burra and contains several targets for gold and copper mineralisation primarily focussed along the 20km North striking Mongolata Trend.



Crystalline gold and quartz, Mongolata No.1 Mine near Burra (Photo supplied by PIRSA)

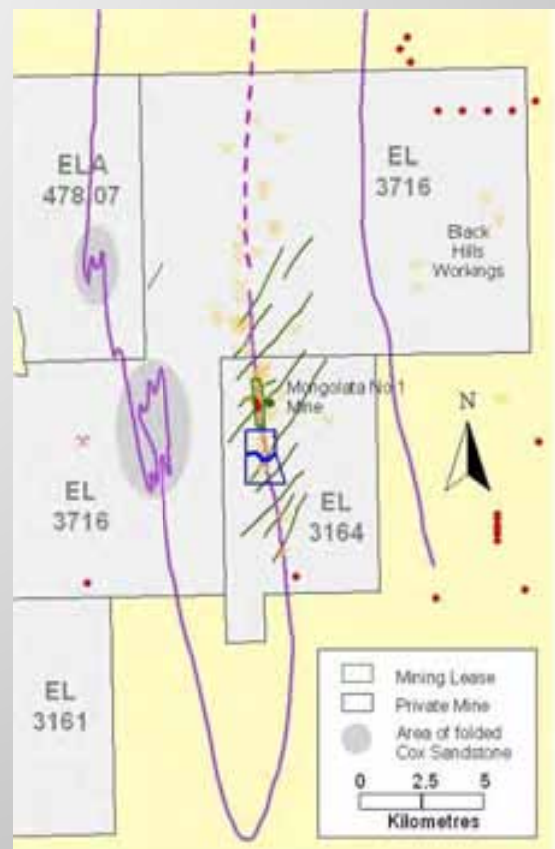


Fig 3a: Mongolata line of workings, showing drillholes and interpreted NE-SW fractures. Cox Sandstone trace in purple.

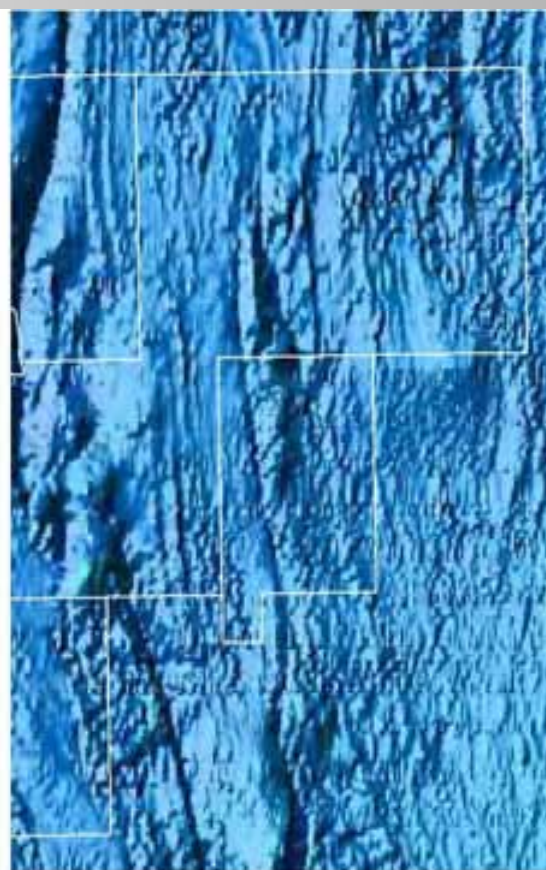
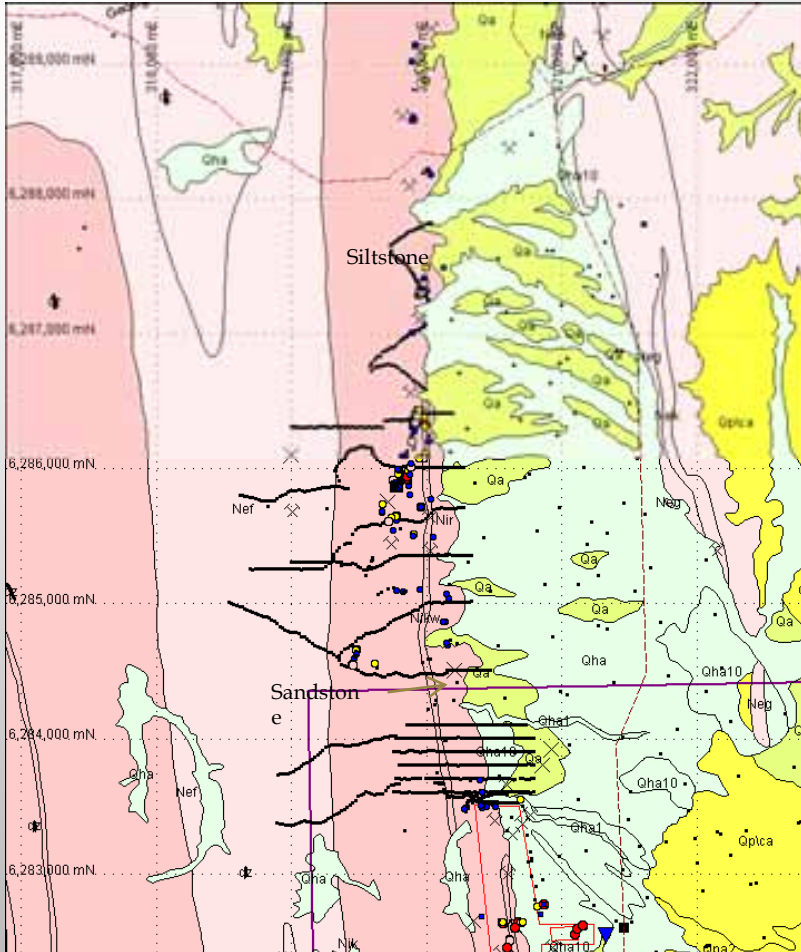


Fig 3b: Mongolata area, with backdrop of Total Magnetic Intensity (TMI) image

Mongolata Coincident Arsenic Gold Trend



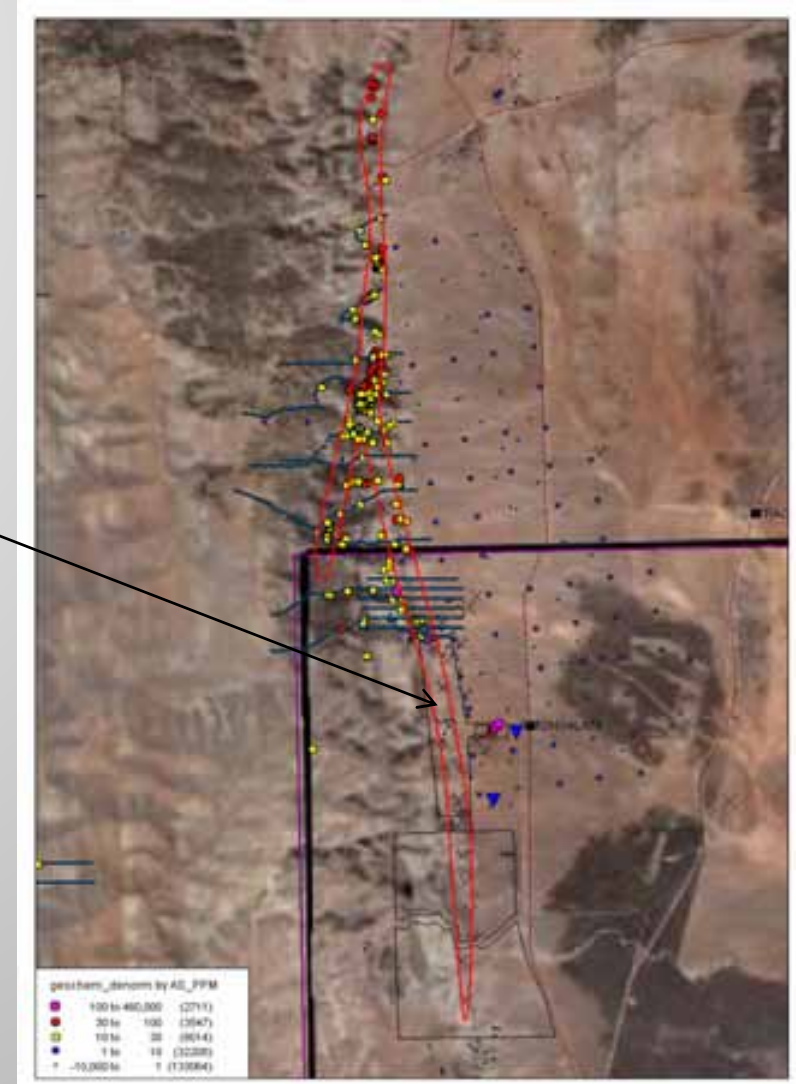
Gold

Master_Rock_samples by Au

●	0.3 to 460,000	(5)
○	0.1 to 0.3	(16)
○	0.03 to 0.1	(29)
●	0.01 to 0.03	(70)
▪	< -10,000 to 0.01	(169)

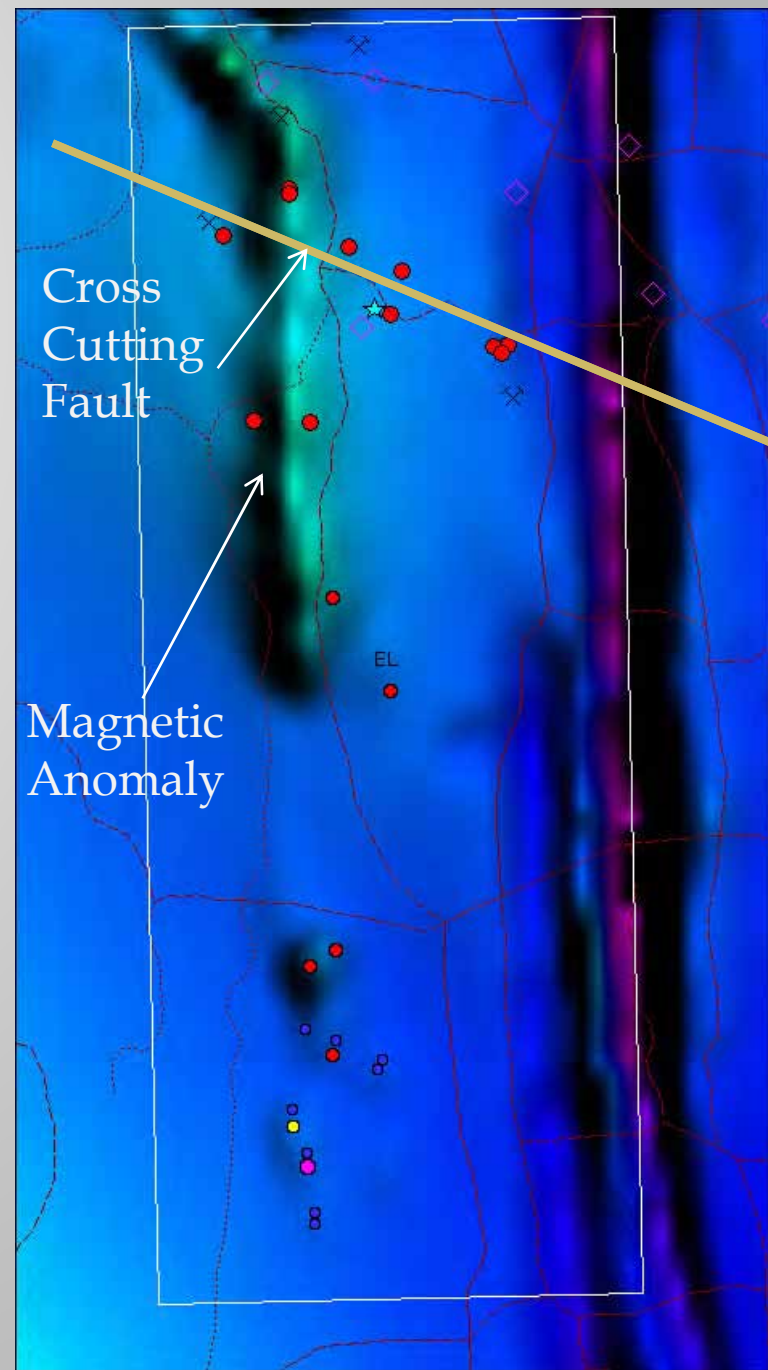
8 old
drill
holes
only

None
to the
north

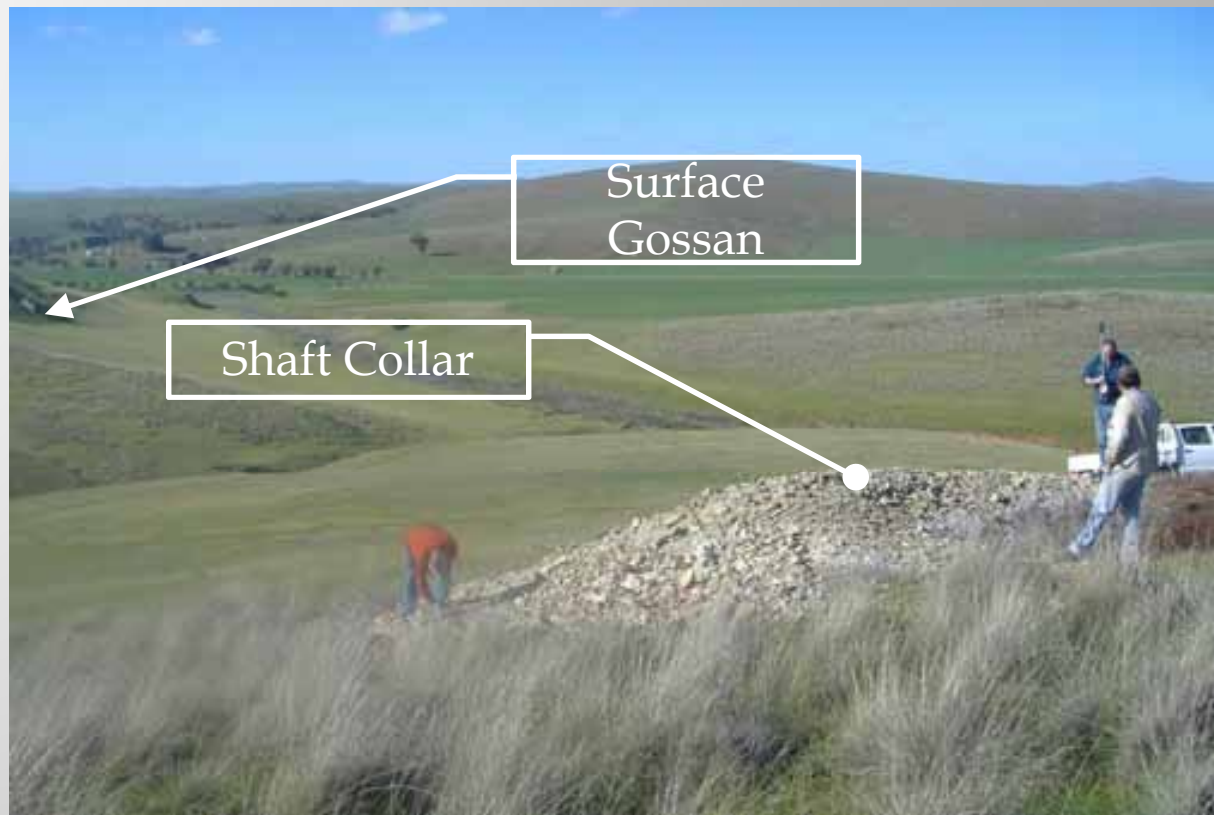


Spalding Project

- **Copper mineralisation.**
- **No drilling at old Broughton or Ardincaple mines.**
- **The strike and depth extensions of these mines represent excellent exploration targets.**
- **A North trending zone of magnetic anomalism on the western margin of the Inlier is coincident with copper mineralisation and therefore a key exploration target.**
- **The WNW alignment of copper occurrences in the Nth of tenement provides a focus for exploration.**



Spalding Project



Ardincaple: a 43 ft deep shaft on the Spalding tenement where old records suggest malachite and Azurite in EW striking gently N dipping qtz veins in sandstone turn to chalcocite at depth

Minlaton Project

- Basement rocks in Block A lie at the southern end of the Olympic IOCG Province host to the giant Olympic Dam Copper Gold Uranium mine.
- Block B is underlain at depth in part by a sequence similar to that of the northern block, and in part by older rocks.
- The exploration targets here are coincident gravity and magnetic highs in the basement.



Figure 5a: Minlaton Project area showing drillholes and interpreted geology

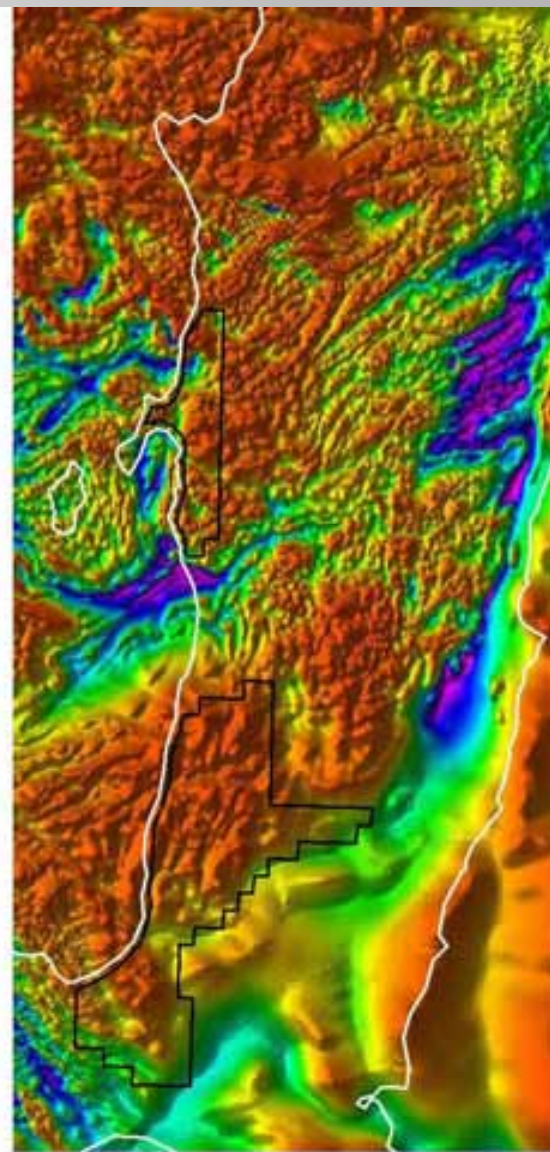
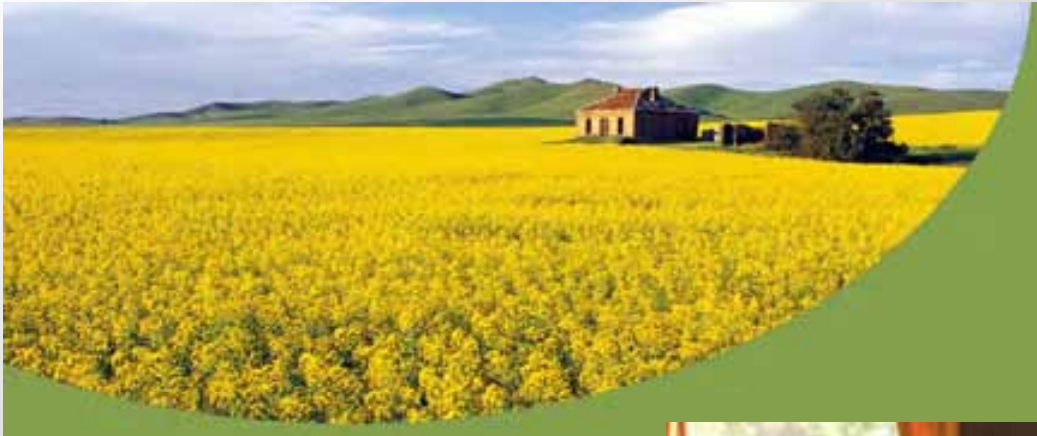


Figure 5b: Minlaton Project area with Total Magnetic Intensity (TMI) image backdrop.

Competent Person's Statement

The information in this presentation that relates to Exploration Results, Mineral Resources or Ore Reserves is based on information compiled by Mark Manly who is a member of the Australasian Institute of Mining and Metallurgy. Mark Manly is a full-time employee of Phoenix Copper. Mark Manly has sufficient experience which is relevant to the style of mineralisation and type of deposit under consideration and to the activity which he is undertaking to qualify as a Competent Person as defined in the 2004 Edition of the 'Australasian Code for Reporting of Exploration Results, Mineral Resources and Ore Reserves'. Mark Manly consents to the inclusion in this presentation of the matters based on his information in the form and context in which it appears.

Phoenix Copper, Regional Council of Goyder, District Council of Yorke Peninsula, Northern Areas Council, the Mid North Regional Development Board, SA Government, Burra, Spalding, Minlaton Communities and Pastoralists, Partners in the regions Future



2-Dec-08

